

Tipa, spol. s r.o.

# USER MANUAL

SIOTECH GPS TRACKER

18. 1. 2019

## **USER MANUAL SIOTECH GPS TRACKER**

### **CONTENT**

- 1. UNPACKING THE DEVICE**
- 2. SETTING UP A NEW ACCOUNT**
  - 2.1. ACCOUNT LOGIN**
  - 2.2. RESTORE PASSWORD**
  - 2.3. REGISTERING NEW DEVICE**
  - 2.4. SETTING MONITOR MODE AND INTERVAL REPORTING**
  - 2.5. DEVICE ACTIVATION**
- 3. WORKING WITH THE APPLICATION**
  - 3.1. MAP**
    - 3.1.1. HISTORY**
    - 3.1.2. MORE AND CHART**
      - 3.1.3. ONLY GPS**
      - 3.1.4. LAST**
      - 3.1.5. TIME SHIFT**
  - 3.2. DATA**
    - 3.3.1. CHART**
    - 3.3.2 TIME SHIFT - CHART**
  - 3.4. FENCES**
    - 3.4.1. SELECT**
    - 3.4.2. POLYGON**
    - 3.4.3. CIRCLE**
    - 3.4.4. FENCE SETTINGS**
  - 3.5. SETTINGS**
    - 3.5.1. NAME**
    - 3.5.2. MODE**
    - 3.5.3. COLOR**
    - 3.5.4. INTERVAL**
    - 3.5.5. EXTENDED SETTINGS**
    - 3.5.6. DEVICE RESET**
    - 3.5.7. TRACKERS SEQUENCE CHANGE**
  - 3.6. MESSAGES**
  - 3.7. NOTIFICATIONS**
  - 3.8. USER INFORMATION**
  - 3.9. EXTENSION OF CONNECTIVITY**



## **1. UNPACKING THE DEVICE**

Unpack the GPS Locator from its packaging.

Packaging contains:

SIOTECH GPS tracker

CR123A battery

Quick Start Guide

QR registration code

Numerical registration code

## **2. SETTING UP A NEW ACCOUNT**

Open the GPS application <https://gps-tracker.mysiotech.com>. Enter your email, name, surname and create your account. We will send you a confirmation email with your login details. With this data you can log in to the application page.

### **2.1. ACCOUNT LOGIN**

You can sign in with your email address and Password. You can change the password any time in the settings.

### **2.2. RESTORE PASSWORD**

If you forget your password while signing in, click on the link "HAVE YOU FORGOTTEN YOUR PASSWORD?". Enter your email and confirm With "RESTORE PASSWORD". Recovery email will be send to you. Click the link in the email to set a new password.

## SIOTECH

Sign up to tracking app

E-mail 

Name 

Surname 

Sign Up

Do you already have an account? [Sign In](#)

## SIOTECH

Sign in to start tracking app

E-mail 

Password 

[Forgot password?](#)

Sign in

Don't have an account? [Sign Up](#)

## SIOTECH

Forgot your password?

E-mail 

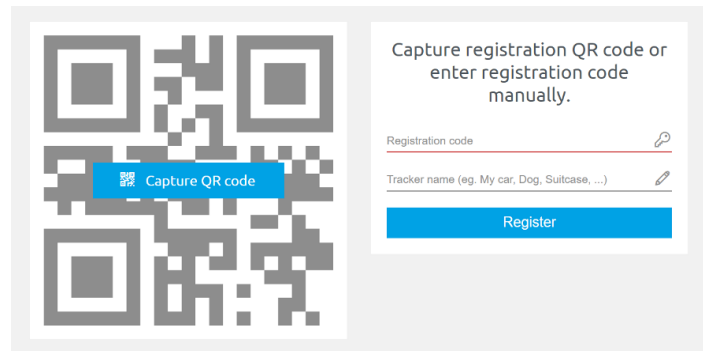
Reset password

Did you remember? [Sign In](#)

### 2.3. REGISTERING NEW DEVICE

For a new device registration add the tracker to the application. Click "ADD NEW TRACKER" link (pic. 2.4.1).

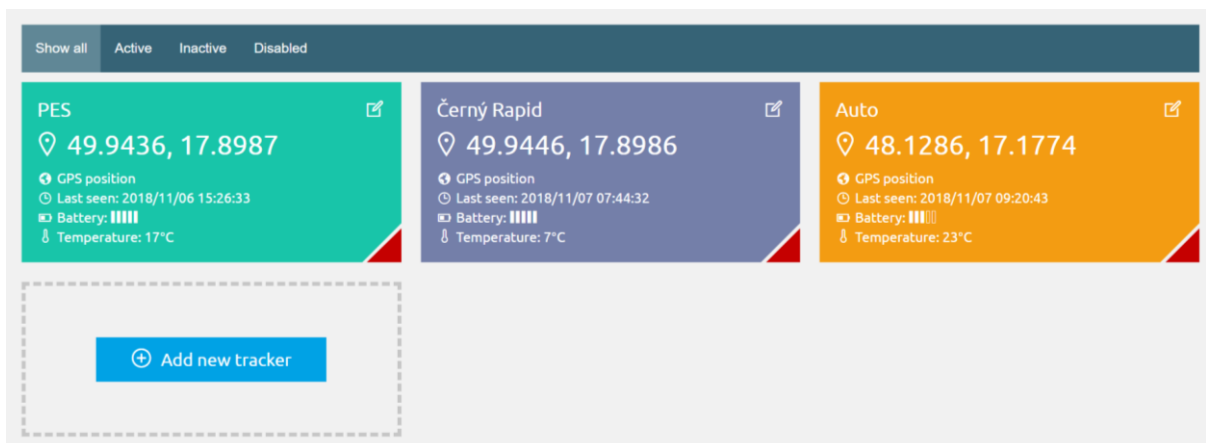
Load the registration QR code that comes with the package or use the numeric registration code and the device name (for example bike, drone, container No. 345).



!!! WARNING QR code based on the chip is for service purposes only (see 2.3.)!!!  
After registering, you can adjust the basic settings. Click "REGISTER".

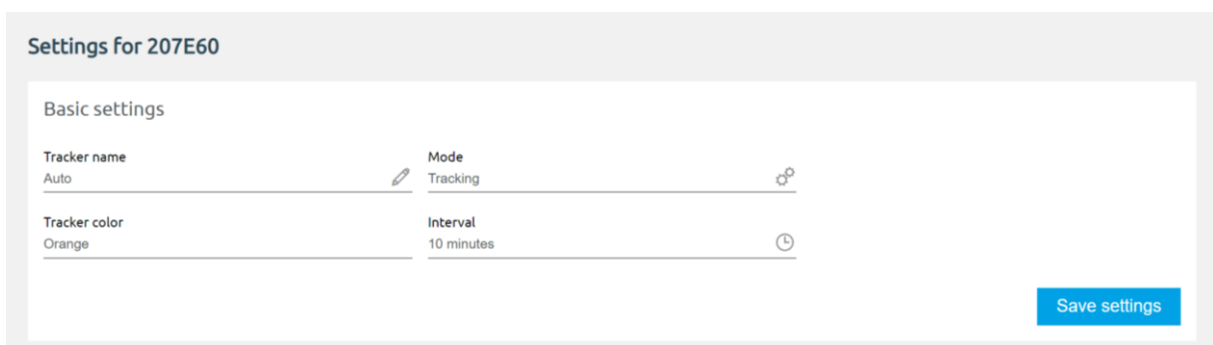
### 2.4. SETTING MONITOR MODE AND INTERVAL REPORTING

Set the tracking mode and the messaging interval. After every change in the settings, the tracker has to be reset - remove the battery and follow the procedure described in 3.5.6. RESET DEVICE. After reset, it is necessary to wait 30 minutes before the new setting is activated. Set up of the device can be done only once every 24 hours (basic tariff).



Individual settings of name, colour, tracking mode and messaging interval can be done in the Settings.

!!! WARNING Siotech GPS tracker can display the data in application with a delay up to one hour on the initial application!!!



## MODE

User can set up the messaging mode.

The device's positioning frequency is set by each user according to their needs. This setting determines how often your device reports on its location. The longer the interval between the sent messages, the longer the battery life will be.

**Motion tracking** - the device is activated and starts sending messages when motion is detected (wake-up).

**Long-lasting motion** - the device is activated and begins to send messages for longer periods of time. The user sets the number of motion detections after which the periodic positioning will begin. This is a battery saving mode.

**Long-term inactivity** - the device will send a message after a set idle time. The device does not send position messages while moving. It sends the last measured position for which the time was set.

## INTERVAL

It offers the possibility of selecting an interval, in which the device will update on its location. **Please note that the more messages are sent, the shorter the battery life will be.** For tracking frequently moving objects (car, bike) select shorter intervals, the position will be recorded for example every 10 minutes and the network of rendered dots will be denser. For more stationary objects (containers, caravans) it is advisable to choose a longer message sending intervals. This will significantly prolong the battery life.

## 2.5. DEVICE ACTIVATION

Before installing the battery, you must register and set the device up, see 2.3. REGISTERING NEW DEVICE and 2.4. SETTING or you can keep the default settings. Insert the supplied battery, then activate the device. Please pay attention to the battery's polarity + and - !

When the battery is inserted into the device, the green LED flashes, do not take the battery out!

When the LED stops flashing, the device is set correctly. If the red LED lights up, it is a sign that you have a bad signal. Repeat the procedure - remove the battery and reinsert it outside of the building so the tracker has a good access to the satellite signal.

ACTIVATION, INTERVAL REPORTING AND MODE SETTING IS POSSIBLE ONLY ONCE EVERY 24 HOURS (basic tariff).

After successful device activation, please screw the screws perpendicularly, otherwise the quality of the product may deteriorate.

## 3. WORKING WITH THE APPLICATION

To log into the application, create an account, see 2. SETTING A NEW ACCOUNT or logs in with your registered data, see 2.1. ACCOUNT LOGIN.

This will open a basic application page with the following features:

MAP – last, time shift

DATA – select tracker, search by title

FENCES – boundaries the monitored areas

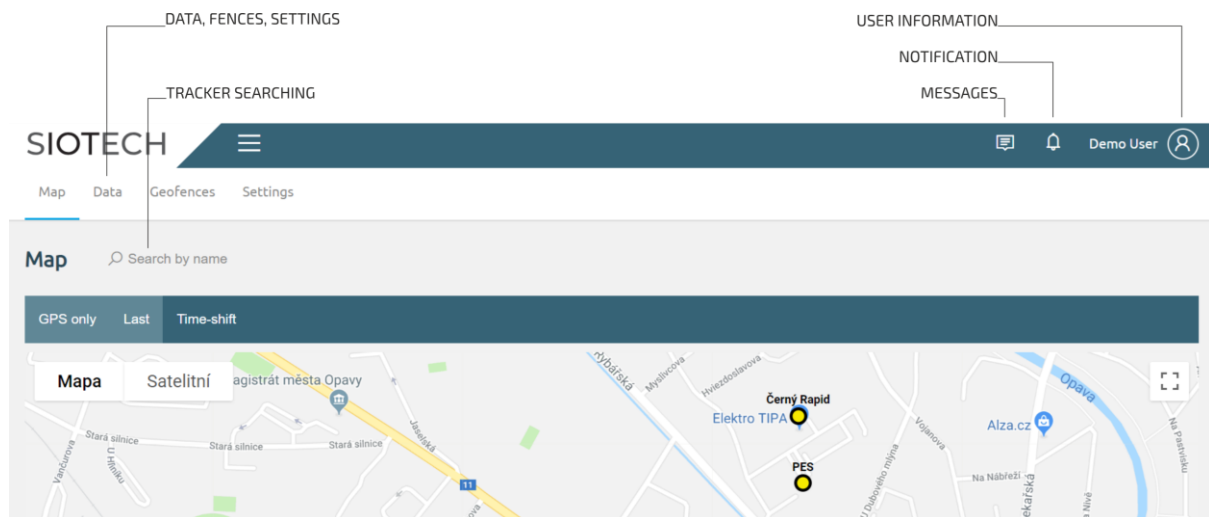
SETTINGS – editing the main parameters (name, colour, interval ...)

TRACKER SEARCHING – search based on 3 or more characters of the relevant trackers on the page

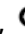

MESSAGES – alerts from the application operator

NOTIFICATION – alerts of exceeding settings (disturbance of fences, leaving of monitored area ...)





USER INFORMATION – basic user information, password change and logout

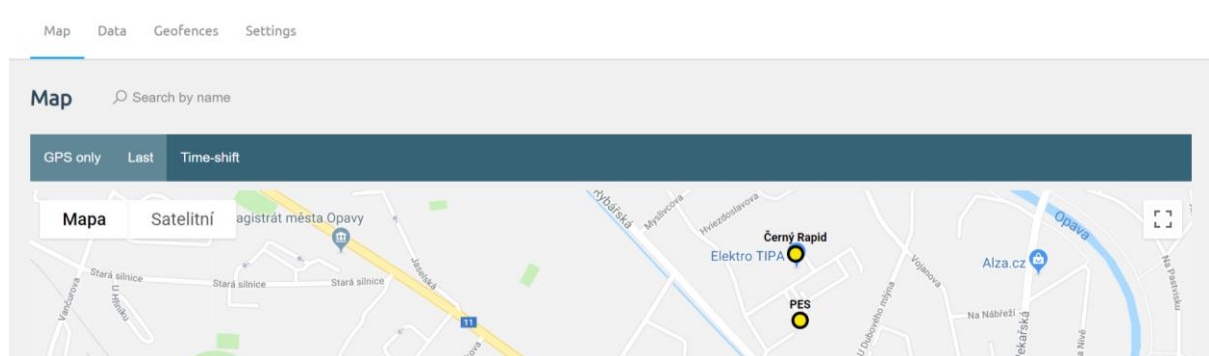


### 3.1. MAP

The points on the map represent the last recorded position of the device. After clicking on the point, the following will display: name, position - latitude and longitude, position calculation -  atlas,  GPS, time and date of the last sent message, remaining battery capacity and temperature. If the GPS position is not available, the position is determined based on the calculated Atlas position. The calculated position is approximate.

Colour marked points on the map (last known position of GPS or Atlas):

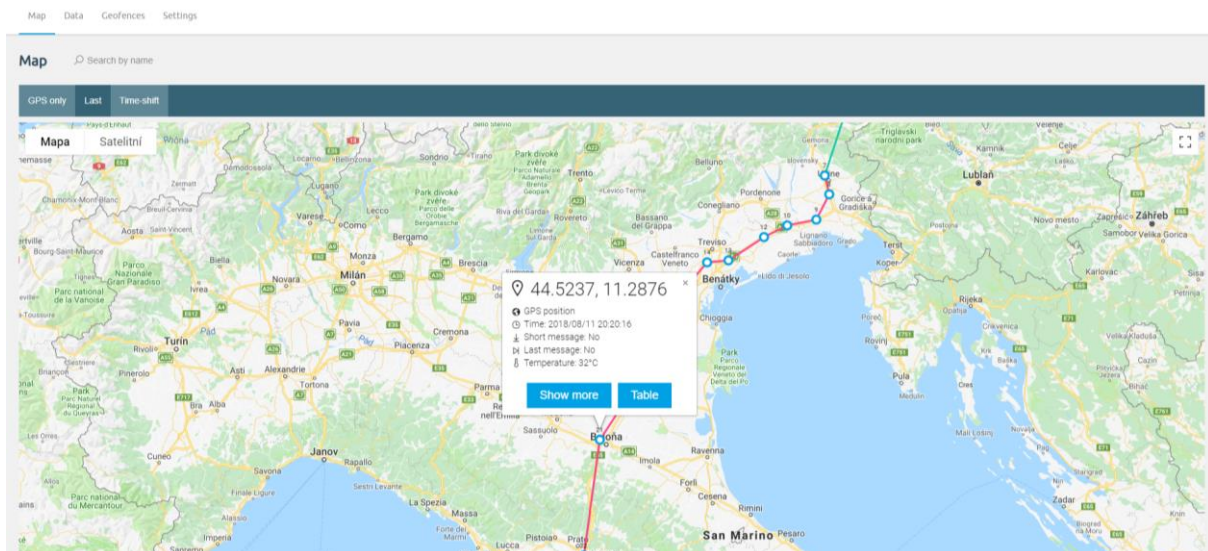
-  Green point: location recording is not older than 10 minutes.
-  Yellow point: location recording is not older than 24 hours.
-  Orange point: location recording is not older than 1 week.
-  Red point: location recording is not older than 1 week or more.



### **3.1.1. HISTORY**

The route history of the device is displayed on the map when clicking the "HISTORY" button. The map shows points connected by lines which show the movement of the device. The number of the points determines the order of their recording; the highest number is the last point. When you click on a specific point, you will see information about time, position and other recorded values. Blue-white points display the GPS monitored position, grey-white points display the Atlas position. You can zoom in or out (CTRL + mouse wheel or zoom in full screen by clicking on the icon at the top right corner of the map and zoom in with the mouse wheel) to make it easier to see the history of your device.

When viewing history, each route is color-coded. The route colour changes if the time between the first and the last GPS movement is more than four times the selected interval. If motion is detected by Atlas, colours of tracks are recorded with grey points and lines.



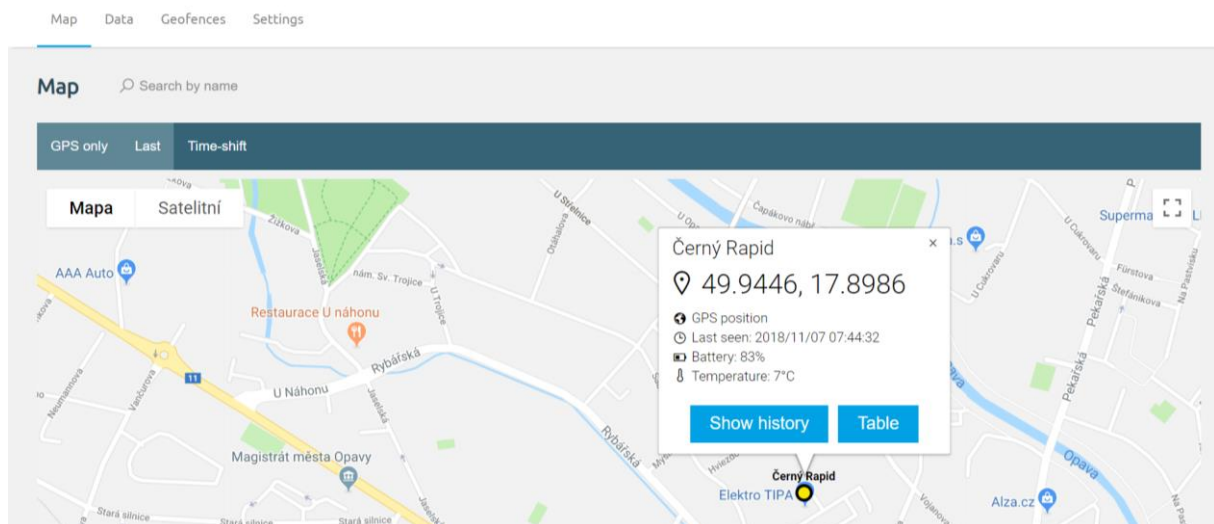
### **3.1.2. MORE AND CHART**

Clicking on "MORE" will extend the preview time to 20 messages.

Clicking on "CHART" will display the recorded data in the chart, see 3.3. CHART

### **3.1.3. ONLY GPS**

The "ONLY GPS" button is for turning on or off displaying the ATLAS position (calculated position based on GPS signal strength).

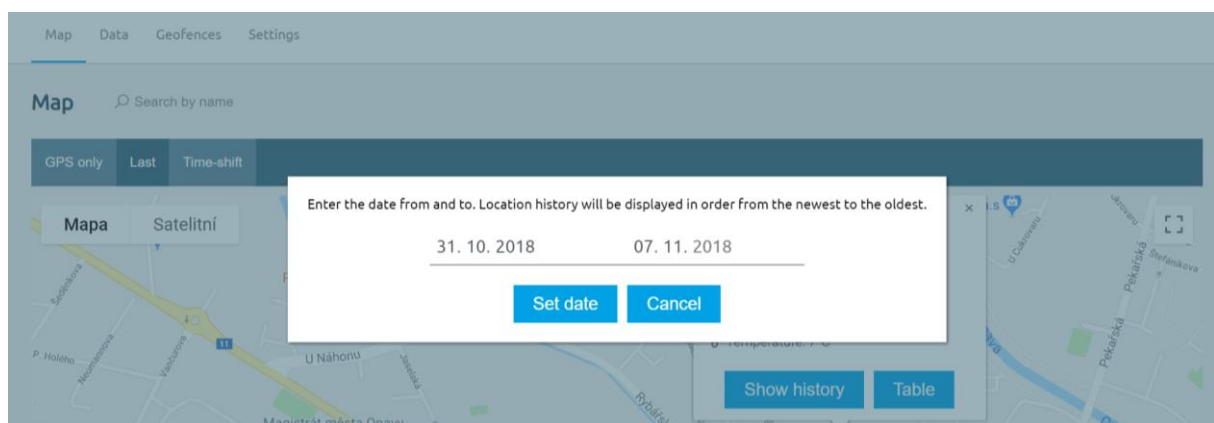


### **3.1.4. LAST**

The latest recorded information about the device.

### **3.1.5. TIME SHIFT**

Click on the tracker you want to filter on the map. Then click above the map on the "TIME SHIFT" button. Enter the date range between two dates in the newly displayed chart (for example: from 1.1.2010 to 2.1.2010). After confirming your date selection by the "SET DATE" button, the map will appear from the most recent date to the oldest, maximum is 20 points. You can add more 20 points on the map by the "MORE" button until the end of the selected period.



### **3.2. DATA**

Displays device information: name, location - latitude and longitude, position calculation method - atlas, GPS, last sent message time, remaining battery capacity and surrounding temperature. If the GPS position is not available, the position is based on the calculated Atlas position. The calculated position is only approximate.



Map Data Geofences Settings

Select tracker  ➕ Add new

Show all Active Inactive Disabled

**PES**  
📍 49.9436, 17.8987  
📶 GPS position  
🕒 Last seen: 2018/11/06 15:26:33  
🔋 Battery:   
🌡 Temperature: 17°C

**Černý Rapid**  
📍 49.9446, 17.8986  
📶 GPS position  
🕒 Last seen: 2018/11/07 07:44:32  
🔋 Battery:   
🌡 Temperature: 7°C

**Auto**  
📍 48.1286, 17.1774  
📶 GPS position  
🕒 Last seen: 2018/11/07 09:20:43  
🔋 Battery:   
🌡 Temperature: 23°C

➕ Add new tracker

Display of battery capacity is only approximate. Discharging varies by battery type and temperature of the environment in which the device is operating.

The name and colour of the device window can be changed in the settings, see 3.5. SETTINGS.

### 3.3.1. CHART

All recorded data can be displayed using a chart in which you can filter by the criteria you specify.

By clicking on the line, you will get displayed GPS or Atlas position based on the concentrations in that line. Device sent periodically service message which are marked by green colour and serve to confirm the correct functionality.

Service messages display only in chart, not in maps.

Map Data Geofences Settings

**Data from PES**

Last	Time-shift	Show more							
Time	Method	Latitude	Longitude	Temperature	Short message	Last message	Acquisition	Seq. number	Note
YYYY/MM/DD	Select				Select	Select			
2018/11/07 10:14:45	Atlas	49.9437	17.8937	10				2608	Service message
2018/11/06 15:26:33	GPS	49.9436	17.8987	17	No	Yes	28	2607	
2018/11/06 14:50:46	GPS	49.9440	17.8982	18	No	Yes	2	2605	
2018/11/06 14:40:47	GPS	49.9440	17.8984	18	No	No	6	2604	
2018/11/06 14:34:22	GPS	49.9443	17.8981	18	No	No	2	2603	
2018/11/06 14:30:03	GPS	49.9442	17.8981	19	No	No	86	2602	

The chart shows the following data:

- TIME OF POSITION RECORDING
- METHOD OF POSITION RECORDING
- LATITUDE AND LONGITUDE

- TEMPERATURE
- SHORT MESSAGE
  - YES - indicates that this is the calculated ATLAS position = without GPS signal
- LAST MESSAGE - the last message without any further movement
- GPS FIXING LENGTH - information about the time needed to fix GPS position from satellites
- SEQUENCE NUMBER – numerical row of incoming message.

### **3.3.2 TIME SHIFT - CHART**

Click the TIME SHIFT button. Select a time interval (for example from 1. 1. 2010 to 2. 1. 2010), the last records (max. 20) from the most recently entered interval are displayed. To display another 20 records, click the NEXT button or repeat until the end of the selected time period. Use the BACK button to return to the previous page of the selected time interval.

## **3.4. FENCES**

You can draw a closed shape on the map to create a bounded area (fence). When crossing a bounded area, the tracker sends a notification to the application. Individual fences can be arbitrarily named and assigned to selected trackers in your account.

### **3.4.1. SELECT**

Motion on the map by holding the left mouse button.

### **3.4.2. POLYGON**

Allows you to create a bounded area that is connected by straight lines.

The area can be retrofitted by clicking on the center or endpoints and dragging to move the point to a new position.

### **3.4.3. CIRCLE**

By clicking on the CIRCLE button and then on the map, you will create a bounded area by the circle. You can also edit the area by clicking and dragging highlighted points.

### **3.4.4. FENCE SETTINGS**

Name - individual areas of fences can be arbitrarily named: home, warehouse, building01

From inside out (leaving) - if the selected tracker leaves the bounded fence area, the notification is sent.

Inside (intrusion) - If the selected tracker enters the bounded fence area, it sends a notification.

Each fence can be assigned by one or more trackers that will perform the set conditions

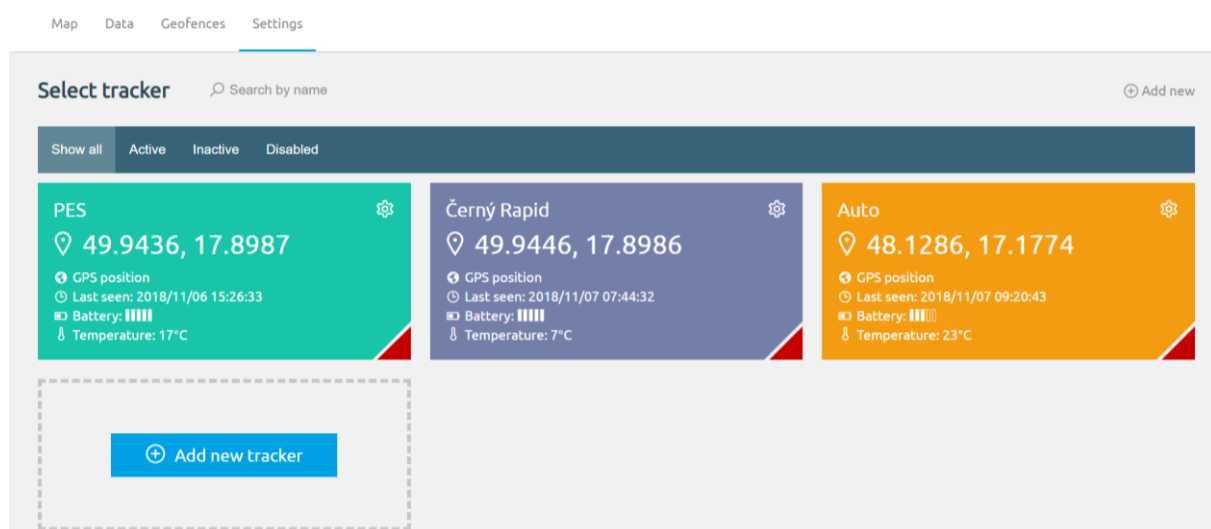
of the given fences (abandonment or disturbance of the fence area).

If you want to delete the created fence, change its name, track direction, or select another tracker for that fence, click anywhere in the selected fence with the left mouse button for the menu.

### 3.5. SETTINGS

Individual settings of name, colour, tracking mode, and messaging interval can be done in the settings. **You can change the setup of the tracking mode and the reporting interval only once every 24 hours** (basic tariff). To reset the settings, reset the battery and reinsert it.

After reset, it is necessary to wait 30 minutes before the new setting is activated.



#### 3.5.1. NAME

The username selected for your device will appear in emails and alerts. You can change the name by clicking the edit icon next to it. Enter a new name and save it.

#### 3.5.2. MODE

The user can set up the messaging mode. The device's positioning frequency is set by each user according to their needs. This setting determines how often your device reports on your location. Longer interval between messages means longer battery life.

**Motion tracking** - the device will activate and start sending messages when motion is detected (wake-up).

**Long-term movement** - The device activates and begins to send messages during longer movement periods (the user will set the number of "wake-ups" after which regular messaging starts). This mode is suitable for saving the battery life.

**Long-term inactivity** - The device sends a message after long (set) inactivity.

### **3.5.3. COLOR**

For each device it is possible to set display colour.

### **3.5.4. INTERVAL**

It offers the possibility of selecting a time interval which determines how often the device will update on its location. Note that the more messages are sent, the shorter the battery life will be.

### **3.5.5. EXTENDED SETTINGS**

Extended setting - 16 adjustable parameters.

### **3.5.6. DEVICE RESET**

After you set the tracker mode and the messaging interval, the device must be reset. Reset is possible only once every 24 hours. **After reset, it is necessary to wait 30 minutes before the new settings are activated.**

Procedure: After inserting the battery into the device, the green LED light will start flashing - do not pull the battery out. When the LED stops flashing, the device is set correctly. If the red LED lights up, it is a sign that you have a bad signal. Repeat - remove the battery and reinsert it outside of the building so the tracker has a good access to the satellite signal. We recommend not to hold it in hand but to place it in a raised place.

After successful device activation, please screw the screws perpendicularly, otherwise the quality of the product may deteriorate.

Note: The battery capacity will go down if you keep resetting the settings.

### **3.5.7. TRACKERS SEQUENCE CHANGE**

You can set the sequence of the individual trackers - activation with long press of the left button of the mouse at least for 3 seconds.

## **3.6. MESSAGES**

The message menu alerts the user about unread notifications. After clicking, all messages will be displayed.

## **3.7. NOTIFICATIONS**

The notification menu refers the user to the set notifications. After clicking all notifications will be displayed. Notifications can be sent to one or more users. Messages can be set as permanent - they will also be displayed to newly registered users, even if they were sent before the user's registration.

Automatic notifications are delivered even when the application is not running.

### 3.8. USER INFORMATION

In the user information menu, you can change your email, password, company name, first name, last name and also sign out of your account.

Map Data Geofences Settings

**My account**

Sign out

Sign out

User data

Email	mysiotech@gmail.com	Current password	Current password	New password	New password
Company	TIPA	Name	Demo	Surname	User

Save changes

User data

Email	mysiotech@gmail.com	Current password	Current password	New password	New password
Company	TIPA	Name	Demo	Surname	User

Save changes

Notification settings

Notify by email	Yes	Notify by SMSemail	No
Email	mysiotech@gmail.com	SMSemail	Email assigned by mobile operator

Save changes

### 3.9. EXTENSION OF CONNECTIVITY

In this application, a basket will be displayed over the tracker some time before the subscription is supposed to run out. The set path will take you to a website where you can buy additional subscriptions.

When you stop using a device with annual connectivity, money cannot be returned for months during which the service was not used.